

## STEP 1

**Equipment from nitric packs: 1** Paed tubing sample line connector **2** Oxygen Stem **3** O2 tubing **4** Smoothbore tubing



## STEP 2

**5** Sample line **6** Green vent adapter **7** Adult tubing sample line connector **8** Filter **9** NoxFlow set



## STEP 3

**Noxbox: 10** O2 flow meter **11** Touch screen **12** Mode selector (Ventilator or Bagging) **13** Dose selector for Manual bagging



## STEP 4

**14** Filter **15** Water trap **16** Power point **17** Pole clamp **18** On/Off **19** Nitric hose Port 1 & 2 **20** Purge valve **21** O2 hose



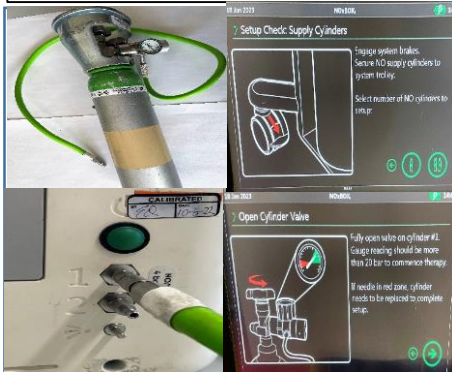
## STEP 5

**Calibration:** Connect O2 hose as shown. Turn on Noxbox, allow self test to run (3mins). Select step-by-step guide.



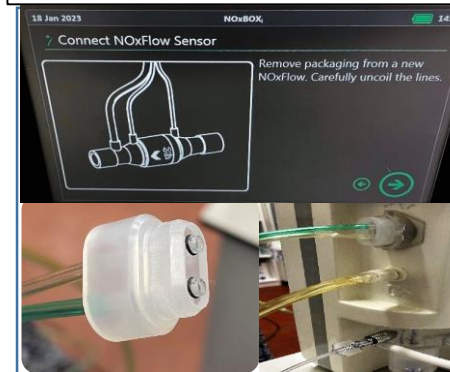
## STEP 6

Ensure regulator is attached correctly. Select 1 cylinder and insert nitric hose into port 1 (**19**). Complete leak test.



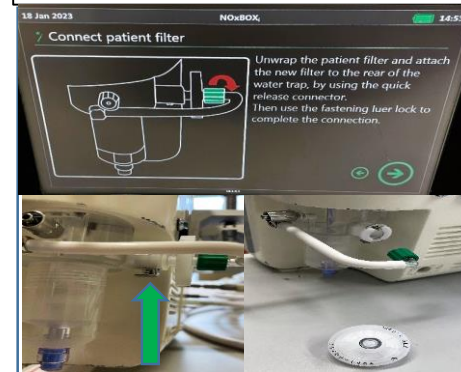
## STEP 7

Connect twin lines of new Noxflow set (**9**) to side of noxbox, ensuring the 2 black rings are intact as shown.



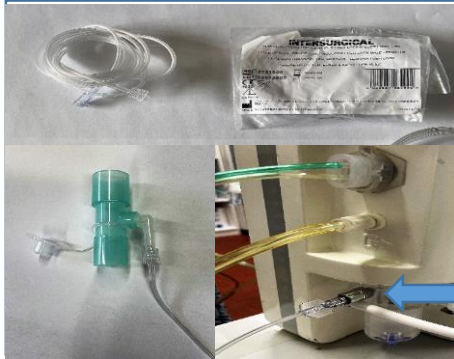
## STEP 8

For new pt set up **only**, change filter (**8**) at back of water trap (**15**). **Do not discard** the water trap at any time



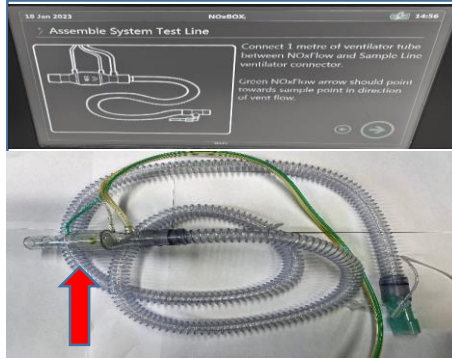
## STEP 9

Attach one end of sample line (5) to adult tubing sample line connector (7) & the other to water trap at side of noxbox.



## STEP 10

Connect adult connector (7) to smoothbore tubing (4) & the NoxFlow to other end - green arrow in direction as shown



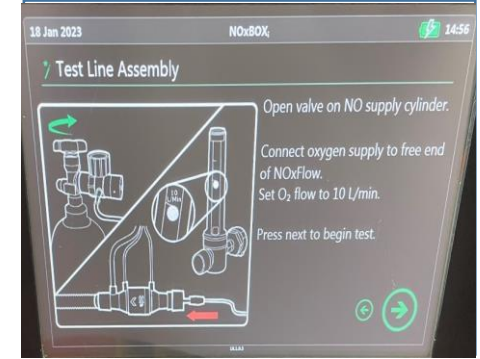
## STEP 11

Connect O2 stem (2) & tubing (3) to free end of the NoxFlow. Connect free end of O2 tubing to flow meter (10) on Noxbox.



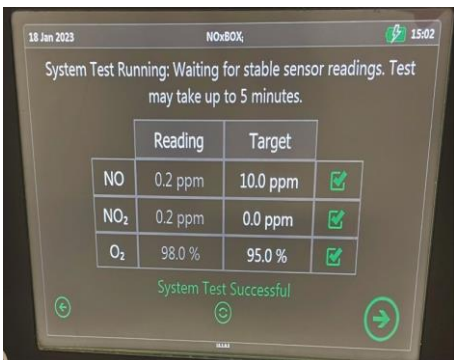
## STEP 12

Ensure oxygen cylinder and nitric cylinder are turned on. Increase flow meter to 10 Litres. Commence calibration test.



## STEP 13

Test usually takes ~ 5 mins. Readings - O2 should rise immediately & NO in 45-60 secs. Green ticks indicate pass.



## STEP 14

**Connect to Vent:** Only Noxflow & sample line needed. Using green vent adapter (6) connect NoxFlow to inspiratory port.



## STEP 15

**Adult tubing:** Use FP circuit with Hamilton exp valve & flow sensor. Connect green adult to inspiratory limb near patient.



## STEP 16

**Paed tubing:** Use Paed vent connector (1) to connect sample line to inspiratory limb. Pre-use checks with nitric lines insitu.

