

Equipment Selection

1. F&P RT202 Optiflow tubing
 2. 1L Water for irrigation
 3. Armstrong pharma HME filter
- Ensure flow req is >25L before opening**



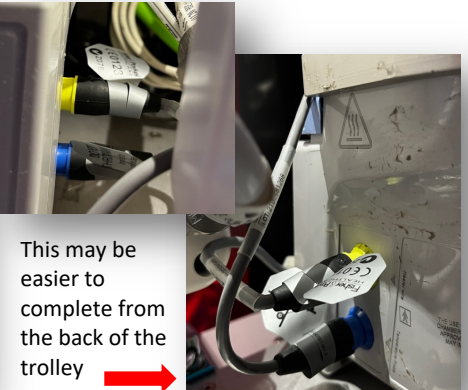
STEP 1

Place an HME filter on inspiratory port. Slide humidifier chamber onto its base & attach RT024 extension tubing to the HME & connect to the nearest port on the humidifier



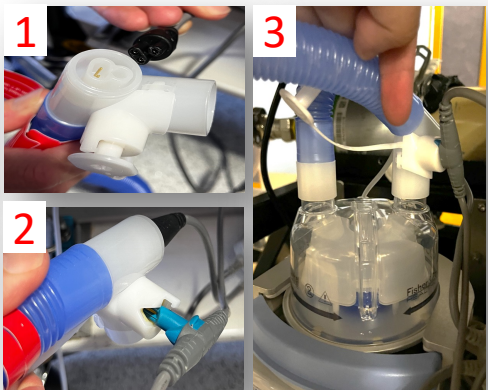
Step 2

Remove humidifier cables from the bag on the trolley. Connect yellow-end cable to yellow port & blue-end cable to blue port. These ports are located on the right side of the humidifier.



Step 3

1. Insert 3-prong probe of yellow cable into three-prong socket at the vent end of tubing. 2. Click 'v' shaped blue probe into 'v' socket next to this. 3. Insert this end of the tubing into the humidifier.



Step 4

At the free 'nasal cannula' end of the tubing, insert the pointed blue probe into the round socket next to the nasal cannula port. Spike the bag of water & hang to allow chamber to fill to line.



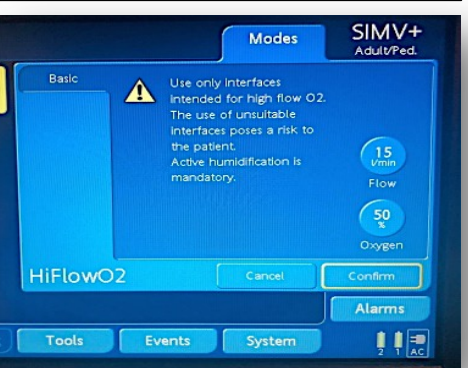
Nasal Cannula selection

Select & connect appropriate size Optiflow+ cannula based on best fit. All Optiflow+ sizes can deliver up to 60L.size based on patient size/nare size ensuring a gap visible around each nare



Hamilton set up

Turn on the Hamilton. No flow or leak test required. Set weight. Mode set up: **Select Adult/Ped for all patients**. In "Modes", select HiFlow O2. Set desired flow & FiO2. **Turn on humidifier to NIV**



O2 consumption calculation

Complete O2 calculation once high flow is established for >5mins. 1. Select 'system' on bottom of main screen. 2. O₂ consumption shown on left hand side in L/min. Enter this in O₂ calc on website.

